



# Škoda Kodiaq

## Product Guide

November 2024

ŠKODA

# Kodiaq: Engine Range

Model Code	Model Description	Seat Configuration	Fuel	Transmission	Gears	CO2 Emissions (g/km)	Fuel Consumption (l/100km)	Annual Road Tax From	Selection From	Selection + From	Sportline From
PS7_DD	1.5TSI 150hp DSG mHEV	7-seats	Petrol	DSG (Auto)	7-speed	140 - 145	6.2 - 6.3	€210	€55,850	€59,695	€62,085
PS7_YC	1.5TSI 202hp DSG PHEV	5-seats	Petrol/Electric	DSG (Auto)	6-speed	09 - 11	0.4 - 0.5	€140	€57,890	€63,290	€65,575
PS7_4D	2.0TDI 150hp DSG	7-seats	Diesel/HVO	DSG (Auto)	7-speed	144 - 148	5.5 - 5.6	€270	€55,140	€60,540	€60,800
PS7_6Z	2.0TDI 190hp DSG 4x4	7-seats	Diesel/HVO	DSG (Auto)	7-speed	162 - 167	6.2 - 6.4	€420	€63,340	€68,740	€71,050

Please note, due to optional additions there is the potential that vehicles may enter higher or lower vrt bands, thus affecting the retail price of the car, please see the final slide for all relevant models.

"Recommended Retail Prices & Annual Road Tax are calculated using the base model WLTP values and are subject to change as a result of your vehicle configuration. Škoda Ireland reserves the right to alter pricing and specification without notice. Delivery & Related Charges Extra - please contact your local Škoda dealer for more information. Škoda Ireland has made every effort to ensure the accuracy of information but does not accept liability for any errors or omissions. The specified fuel consumption and emission values were presented, are the official figures unless stated otherwise and are obtained in accordance with Worldwide Harmonized Light Vehicle Test Procedure (WLTP) and are correct at the time of publication. WLTP values reflect the worldwide standard vehicle range excluding additional equipment such as optional extras and accessories which may have an effect on the fuel consumption (l/100km) and CO<sub>2</sub> emissions produced. Please note WLTP values for vehicle range and consumption may not be realised in real or day to day driving conditions"

**SKODA**



# Selection: Key Equipment

## SAFETY

Advanced driver alert

Hill hold control

Electrical child safety lock system

Seatbelt warning system

Electronic stability control (ESC) & Anti-slip regulation (ASR)

iSOFIX child seat anchor points (1x co-driver & 2x outer rear)

Emergency call (e-call)

Tyre pressure monitoring system (TPMS)

7 airbags (incl. driver, co-driver, side, front, head + central airbag)

Key safety assist systems:

- Front assist
- Side assist
- Lane assist
- Turn assist
- Rear cross assist
- Emergency assist
- Intelligent speed assist
- Multi collision brake assist



## FUNCTIONAL

Adaptive cruise control

'Kessy Full' – Keyless entry/go system incl. anti-theft alarm & walkaway locking function

Infotainment system incl. 10.4" touchscreen display, Bluetooth & 9 speakers

Wireless Smartlink (Apple Carplay & Android Auto)

Dual wireless charging pad (subject to device compatibility)

Climatronic 3-zone air conditioning

USB-C charging points – 2x front/2x rear/1x mirror

Digital smart dials

Front & rear parking sensors

Rear view camera

Electric tailgate

Trailer hitch preparation

Front & rear electric windows

Auto-dimming rear-view mirror

10.25" digital driver dashboard display

Traffic sign recognition

Remote access (3-year subscription)



## INTERIOR

Black/Grey 'Loft' fabric upholstery

Interior ambient lighting incl. footwell lighting

Unique Dark Chrome (UDC) decorative inserts

2-spoke leather multi-function steering wheel with tiptronic paddles

Heated front seats

Electric driver seat incl. height adjustment & lumbar support

Front & rear centre armrest incl. storage compartment

Front & rear floor mats

Luggage compartment lighting incl. storage compartments & 12-volt socket

Split folding rear seat & mechanical seat release

7 seat configuration (PHEV only available in 5 seats)

## EXTERIOR

18" Soira anthracite alloy wheels

Spare wheel, tool kit & jack

Body coloured exterior mirrors

Electrically adjusted/heated exterior mirrors

LED headlights & LED daytime running lights

LED taillights

All weather lights

Black roof rails

Black window surrounds

SKODA

# Selection +: Key Equipment

Effortlessly combining technology with practicality, the Selection + is equipped with many of the most popular features the Kodiaq has to offer. Key equipment includes (in addition to Selection spec):

---

Leather Suite upholstery (Black or Cognac)

---

19" Halti alloy wheels

---

Matrix LED headlights incl. variable light distribution

---

LED taillights with dynamic indicators

---

Illuminated front grill incl. dark chrome front grille inserts

---

Dynamic welcome/leaving effect animation

---

'SUNSET' dark tinted privacy glass

---

Anodized chrome roof rails

---

Scuff plates in door sill

---



SKODA

# Sportline: Key Equipment

With sharp, sleek details both inside and out, the Sportline is distinctive from every angle. Packed with exclusive styling, the Sportline will ensure you can indulge your thirst for adventure in total comfort. Key equipment includes (in addition to Selection spec):

---

19" 'Tirsuli Anthracite' alloy wheels (Not standard on 4x4, see next page)

---

Matrix LED headlights incl. variable light distribution

---

LED tail lights with dynamic indicators

---

Panoramic sunroof

---

3-spoke sport multifunction leather steering wheel with tiptronic paddles

---

Power folding exterior mirrors – driver incl. auto-dimming, memory function & blind spot illumination

---

Sportline exterior styling pack:

- Front & rear sports bumpers
- Black gloss exterior mirrors
- Black gloss front grille surround
- Black gloss roof rails
- Black gloss rear D-pillar

---

Sportline interior styling pack:

- Black Suedia & leatherette upholstery
  - Front sports seats
  - Dark interior headliner
  - Aluminium door sills & sports pedals
- 



SKODA

# Kodiaq: Wheels



18" Soira anthracite alloy wheels  
(Code 45N)

19" Halti anthracite alloy wheels  
(Code 53Q)

19" Rapeto silver alloy wheels  
(Code PJ2)

19" 'Tirsuli' anthracite alloy wheels (Code 53R)

20" 'Rila' aero alloy wheels  
(Code PJ6)

CODE	DESCRIPTION	Selection	Selection +	Sportline
F04	18" Soira anthracite alloy wheels	<b>STANDARD</b>	---	---
46W	19" Halti anthracite alloy wheels	---	<b>STANDARD</b>	---
PJ2	19" Rapeto silver alloy wheels	---	€0	---
43K	19" 'Tirsuli' anthracite alloy wheels	---	---	<b>STANDARD</b>
PJ6*	20" Rila aero alloy wheels	---	€1,180	€1,110

\*Standard on 4x4 2.0TDI 190 BHP Sportline Engine

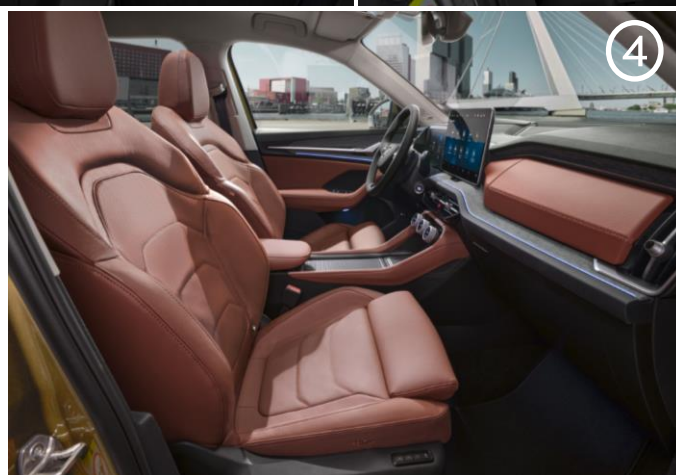
Option prices quoted are for reference only and are subject to change depending on VRT band applicable – please contact your local Škoda dealer for more information.

**SKODA**



# Kodiaq: Design Selection – Upholstery & Decorative trim

IMAGE	DESIGN	CODE	LINKED OPTIONS	UPHOLSTERY	DASHBOARD	DOOR LINING	ROOF LINER
1	Loft	ED	---	Black & grey fabric with green & black stitching	Black-grey fabric	Black-grey fabric	Grey
2	Lounge	EV	PI1	Grey fabric & Suedia with mustard stitching	Grey Suedia	Grey Suedia	Grey
3	Suite Black	EO	PI2	Black leatherette with grey stitching	Black leatherette	Black leatherette	Grey
4	Suite Cognac	EW	PI3	Cognac leatherette with cognac stitching	Cognac leatherette	Cognac leatherette	Grey
5	Sportline	EA	---	Black suedia & leatherette with grey stitching	Black Suedia	Black Suedia	Black



# Kodiaq: Design Selections

CODE	LINKED OPTIONS	DESIGN SELECTION	Selection	Selection +	Sportline
ED	---	Loft Design selection	<b>STANDARD</b>	---	---
EV	PI1	Lounge Design selection	€ 2,450	---	---
EO	PI2	Suite Black Design selection	€ 2,670	<b>STANDARD</b>	---
EW	PI3	Suite Cognac Design selection	€2,670	€0	---
EA	---	Sportline Design selection	---	---	<b>STANDARD</b>



# Kodiaq: Optional Extras

PACKAGES		Selection	Selection +	Sportline
PWD	<b>Winter pack:</b> <ul style="list-style-type: none"> <li>Rear heated seats</li> <li>Heated 3-spoke sports steering wheel with tiptronic paddles</li> </ul>	€555	€555	€415
PLB	<b>Light &amp; View pack:</b> <ul style="list-style-type: none"> <li>Matrix LED headlights (standard on Sportline)</li> <li>LED taillights with dynamic indicator (standard on Sportline)</li> <li>Illuminated front grill incl. dark chrome front grille inserts</li> </ul>	€2,210	<b>STANDARD</b>	€225
PTA	<b>Technology pack :</b> (requires YOZ) <ul style="list-style-type: none"> <li>13" Display</li> <li>Navigation</li> <li>Display cleaner</li> <li>Remote access + Infotainment Online</li> </ul>	€1,505	€1,505	€1,505
PTD	<b>Technology pack plus :</b> (requires YOZ) <ul style="list-style-type: none"> <li>13" Display</li> <li>Navigation</li> <li>Display cleaner</li> <li>Head up display (HUD)</li> <li>Remote access + Infotainment Online</li> </ul>	€2,190	€2,190	€2,190
PXC	<b>Optic pack:</b> <ul style="list-style-type: none"> <li>Anodized chrome roof rails</li> <li>Unique dark chrome D pillar</li> <li>Scuff plates in door sill</li> </ul>	€635	<b>STANDARD</b>	---
PPP	<b>Performance pack:</b> (4x4 only) <ul style="list-style-type: none"> <li>Dynamic Chassis Control (DCC)</li> <li>Drive mode select</li> <li>Progressive steering</li> <li>Hill start assist</li> </ul>	€1,315	€1,315	---
OPTIONS		Selection	Selection +	Sportline
3FU	Panoramic sunroof	---	€1,715	<b>STANDARD</b>
4KF	'SUNSET' dark tinted privacy glass	€325	<b>STANDARD</b>	<b>STANDARD</b>
PK0	Tow bar – electrically retractable (PHEV only)	€1,115	€1,115	€1,115
YOZ	Remote Access & Infotainment Online (3-year subscription) (requires PTA/PTD)	€0	€0	€0
EA9	Extended warranty (5 year / max. 150,000km)	€1,105	€1,105	€1,105

**SKODA**

Option prices quoted are for reference only and are subject to change depending on VRT band applicable – please contact your local Škoda dealer for more information.

# Kodiaq: Exterior Colours



Energy Blue (K4K4 – Solid)



Steel Grey (M3M3 – Solid)



Bronx Gold ( P4P4 – Metallic)



Moon White (2Y2Y – Metallic)



Black Magic (1Z1Z – Metallic)



Graphite Grey (5X5X – Metallic)



Brilliant Silver (8E8E – Metallic)



Race Blue (8X8X – Metallic)



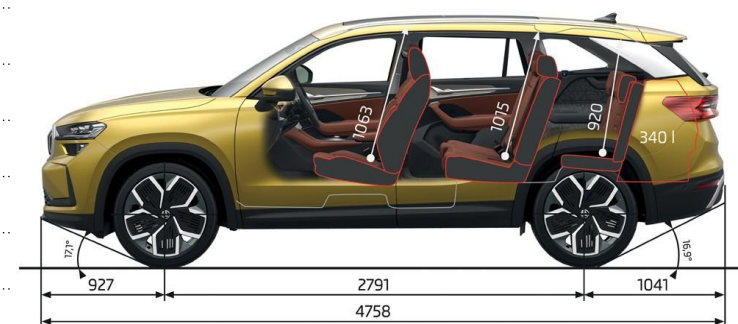
Velvet Red (K1K1 – Exclusive)

DESCRIPTION	Selection	Selection +	Sportline
Solid: Energy Blue	€0	€0	€0
Solid: Steel Grey	€980	€980	€980
Metallic	€980	€980	€980
Exclusive: Velvet Red	€1,565	€1,565	€1,565

Option prices quoted are for reference only and are subject to change depending on VRT band applicable. All the colour images on this page are matched as accurately as possible to the actual paint colours used. However, due to print processes, Škoda Ireland cannot guarantee that colours shown are 100% accurate. Please contact your local Škoda dealer for more information.

# Kodiaq 5 & 7-Seat: Technical Data

	1.5TSI 150hp m-HEV DSG	2.0TDI 150hp DSG	2.0TDI 190hp DSG 4x4	1.5TSI 202hp PHEV DSG
Fuel Type	Petrol	Diesel	Diesel	Petrol/Electric
Cylinders / Displacement (cc)	4 / 1498	4 / 1968	4 / 1968	4 / 1498
Max. Power: kW	110	110	142	Petrol engine : 110 PHEV motor: 40
Max/ Torque: Nm	250	360	400	250
Transmission	DSG (Auto)	DSG (Auto)	DSG (Auto)	DSG (Auto)
Gears	7-speed	7-speed	7-speed	6-speed
Traction System	Front wheel drive	Front wheel drive	All wheel drive	Front wheel drive
Length (mm)	4758	4758	4758	4758
Width (mm)	1864	1864	1864	1864
Height (mm)	1678	1678	1676	1674
Wheelbase (mm)	2788	2788	2789	2790
Luggage Capacity (l) (PHEV - 5 seat configuration)	340 – 845	340 – 845	340 – 845	745
Top Speed (km/h)	205	203	217	210
0 – 100km/h (seconds)	9.9	9.8	8.0	8.4
Turning Circle (m)	11.2	11.2	11.2	11.2
WLPT Fuel Consumption (Min – Max)				
Combined (l/100km)	6.2 – 6.3	5.5 – 5.6	6.2 – 6.4	0.4 – 0.5
Range WLTP (km)	---	---	---	112 – 115
WLTP Emissions Combined (CO2 g/km)	140 – 145	144 – 148	162 – 167	09 – 11
Gross Vehicle Weight (kg)	2341	2407	2510	2432
Max. Towing Capacity –Braked (kg) at 12 %	1800	2000	2500	1800
Fuel Tank Capacity (litres)	55	55	58	45
Battery size (kWh)	---	---	---	19.7



SKODA



# Battery & Charging

The new Kodiaq iV is well suited not only for home charging, but also for charging at public chargers. Plus, the battery is continuously charged by regenerative braking because it processes the kinetic energy generated when braking. Fitted with a 25kWh Lithium-ion battery which provides a WLTP range of over 100km.

Charging times (approximate data):

Source	Charging power	SoC	Charging time
DC	40 kW*	10–80%	25 min.
AC	11 kW**	0–100%	2 h 30 min.
	2.3 kW***	0–100%	11 h 15 min.

\* Maximum DC charging power is dependent upon various charging conditions and may vary as a result.

\*\* Typically, a public charger or home wallbox with three-phase 16 A.

\*\*\* Typically charging from a household socket with one-phase 10 A.

Charging cables compatible with the Kodiaq iV:



**Mode 3**

From charging from a wallbox

standard



**Wallbox cable (Type 2)**

The cable is part of the AC charging station

-



**Mode 4 (CCS2 connector)**

The cable is part of the DC charging station

-



# HVO (Hydrotreated Vegetable Oil)

## Fuel your new diesel Škoda with HVO and reduce emissions by up to 90%

### What is HVO?

HVO is a fuel replacement or alternative for compatible diesel engines. HVO offers a cleaner way to fuel by providing up to 90% reduced CO2 emissions. Unlike first generation biofuels, which are made from crops such as rapeseed and soy, Hydrotreated Vegetable Oil (HVO) is a second-generation biofuel made from pre-existing bio-waste products, primarily used cooking and vegetable oil from food industry waste. Manufactured from renewable and sustainable waste, HVO is a paraffinic drop-in fuel designed as a direct replacement for diesel. It meets the international fuel standard EN 15940. HVO can provide full lifecycle greenhouse gas (GHG) emission savings of up to 90% when compared to conventional diesel fuel.



### What are the benefits?

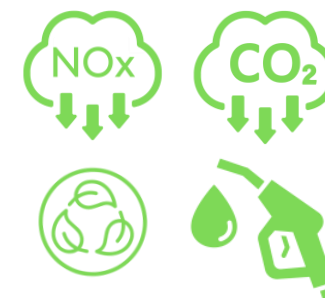
**Sustainability** – Made from sustainable and renewable raw materials, HVO reduces carbon emissions by as much as 90%. This enables households and businesses to make an immediate reduction in carbon emissions and reduce their environmental impact.

**Improved Air Quality** due to a reduction in particle and nitrogen oxide (Nox) emissions compared to diesel

**Performance** – Your vehicles performance will be indistinguishable from diesel with the fuel performing better under certain circumstances such as cold winter conditions

**Direct Drop-In** – No modifications are required to new Škoda's in order to use HVO. HVO and diesel fuel can be interchanged and mixed in any ratio or concentration.

**Price** – currently many fuel suppliers in Ireland are providing HVO at a comparable or equivalent price to diesel. So there is no additional cost to switching



### Where can I get HVO for my Škoda?

HVO is already available at selected Certia and Circle-K outlets in Dublin, Tipperary, Carlow, Cork and Donegal with availability improving all the time.



### How do I know if my Škoda is compatible with HVO?

Only Škoda vehicles from “Model Year 2022” (not registration in 2022) are compatible with HVO. You can identify if your Škoda is HVO compatible by the lettering “XTL” detailed inside the fuel filler flap. If you are unsure of your vehicles model year please contact your Škoda Dealer. Biodiesel or vegetable oil should not be used in Škoda vehicles and these products should not be confused with HVO. Only HVO that meets standard EN 15940 should be used in Škoda vehicles.





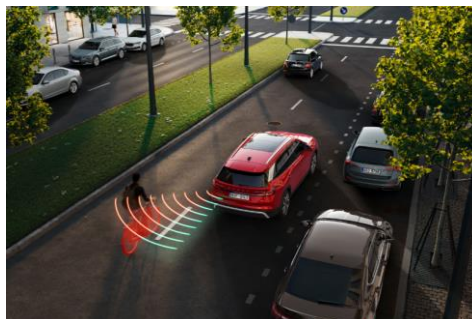
# Kodiaq: Safety Assist Systems

The Kodiaq New Generation has been designed with safety at the forefront and has therefore been fitted as standard with industry leading safety systems, providing the utmost peace of mind for both drivers and passengers. Key safety system includes:



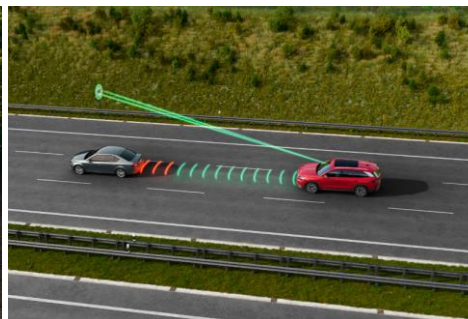
*Front Assist*

This system monitors the distance from the car in front and will automatically apply braking and pedestrian protection measures such as a visual collision warning or gradual braking pressure depending upon speed. The system also factors in stationary objects such as pedestrians.



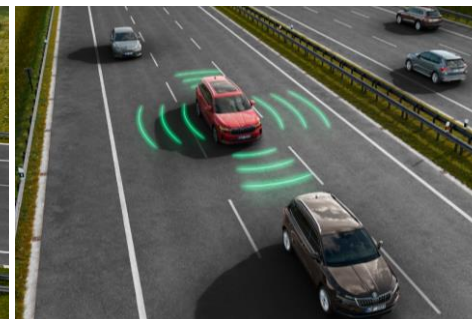
*Side Assist*

This system alerts drivers of approaching vehicles that are hidden in the blind spot. A warning light housed in the wing mirrors flashes to notify the driver of approaching objects.



*Intelligent Speed Assist*

By recognizing road signs, the driver is alerted visually and acoustically when over the speeding limit. This can be adjusted in the infotainment system.



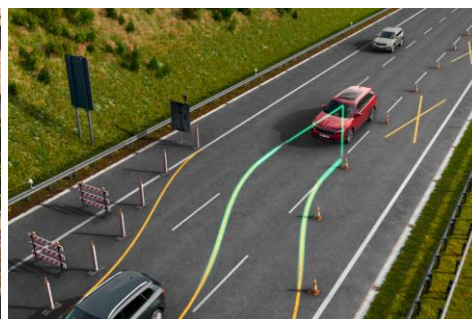
*Emergency Assist*

When the driver begins to show signs of inactivity, the vehicle will engage this safety feature. For example, the vehicle applies braking pressure, and the seatbelt is jerked to alarm the driver.



*Turn Assist*

When the vehicle is turning at speeds between 2-20km/h and there is another vehicle approaching from the opposite direction, automatic brakes will be activated if a predicted collision is imminent.



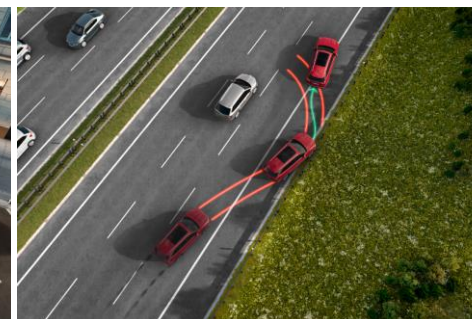
*Lane Assist*

This system will use automated steering to bring the vehicle back into road position if it begins to veer out of its lane. The front camera monitors the position of the vehicle within its respective lane.



*Rear Cross Assist*

While performing a reversing manoeuvre, the rear sensors will monitor the area behind the vehicle and if a potential danger is sensed, the automatic brakes are activated, and the vehicle is brought to a halt.



*Multi Collision Brake Assist*

In the event of a collision, the sensors in the vehicle will react, in turn activating the automatic braking system to prevent any further accidents.



# Kodiaq: Engine Range

Model Code	Model Description	Seat Configuration	Fuel	Transmission	Gears	CO2 Emissions (g/km)	Fuel Consumption (l/100km)	Annual Road Tax From	Selection From	Selection + From	Sportline From
PS7DDDD1	1.5TSI 150hp DSG mHEV	7-seats	Petrol	DSG (Auto)	7-speed	140 – 145	6.2 – 6.3	€210	€56,825	---	---
PS7RDDC1	1.5TSI 150hp DSG mHEV	7-seats	Petrol	DSG (Auto)	7-speed	140 – 145	6.2 – 6.3	€210	---	---	€60,915

*"Recommended Retail Prices & Annual Road Tax are calculated using the base model WLTP values and are subject to change as a result of your vehicle configuration. Škoda Ireland reserves the right to alter pricing and specification without notice. Delivery & Related Charges Extra - please contact your local Škoda dealer for more information. Škoda Ireland has made every effort to ensure the accuracy of information but does not accept liability for any errors or omissions. The specified fuel consumption and emission values were presented, are the official figures unless stated otherwise and are obtained in accordance with Worldwide Harmonized Light Vehicle Test Procedure (WLTP) and are correct at the time of publication. WLTP values reflect the worldwide standard vehicle range excluding additional equipment such as optional extras and accessories which may have an effect on the fuel consumption (l/100km) and CO<sub>2</sub> emissions produced. Please note WLTP values for vehicle range and consumption may not be realised in real or day to day driving conditions"*

**SKODA**